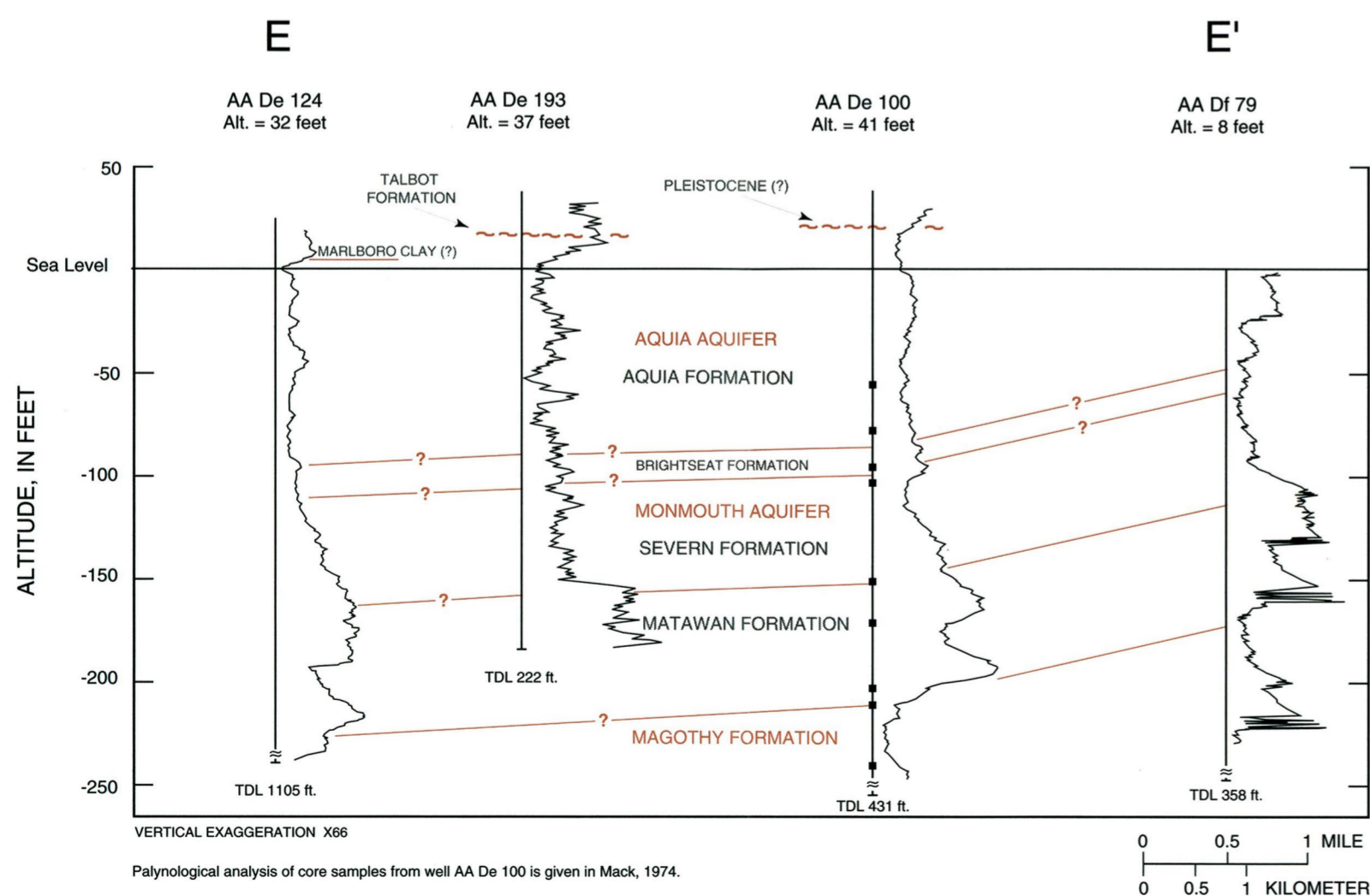


1, 2, 3 - Core samples from nearby wells AA De 144, AA De 155, and AA De 159 respectively. Palynological analysis of core samples is given in Appendix F. Core depths are adjusted for dip.
 Palynological analysis of core samples from well AA De 100 is given in Mack, 1974.



Palynological analysis of core samples from well AA De 100 is given in Mack, 1974.

EXPLANATION

— ? — INFERRED LINE OF CORRELATION, QUERIED WHERE UNCERTAIN.
 - - - UNCONFORMITY MARKING THE CONTACT BETWEEN TERTIARY AND QUATERNARY SEDIMENTS.
 AA De 193 WELL NUMBER
 Alt. = 37 feet ALTITUDE OF WELL IN FEET ABOVE SEA LEVEL

WELL BORE
 SAND DEFLECTION
 GAMMA LOG, RADIATION INCREASES TO RIGHT
 CORE SAMPLE
 TDL 222 ft. TOTAL DEPTH LOGGED IN FEET BELOW LAND SURFACE

