

Baker-Wibberly and Associates, Inc., 1973. Mine abatement measures for the Northern Youghiogheny River Complex, unpublished report to the Maryland Geological Survey, 103 p.

Brezinski, D.K., 1989. The Mississippian System in Maryland: Maryland Geological Survey Report of Investigations No. 52, 75 p.

Co, D.C., 1968. Late-glacial pollen record from the West Virginia-Maryland border; *Catawba*, v. 33, p. 137-149.

Jacobson, E.F. and Lyons, P.K., 1985. Coal geology of the lower Youghiogheny coal field, Garrett County, Maryland; U.S. Geological Survey Coal Map 101, scale 1:240,000.

Swartz, C.K., and Baker, W.A., 1922, the coal formations and mines of Maryland, in Second Report on the coals of Maryland: Maryland Geological Survey, v. 11, pt. 1, 296 p.

Cross section line

- A'** ——— **Contacts**
- **Geologic contacts; approximately located, dotted where concealed**
- Faults**
- **Fault; approximately located. U refers to up thrown side, D to down thrown side**
- **Small, minor reverse fault; showing strike and dip**
- Coal Beds**
- **uk** **Projected outcrop trace of coal bed; dotted where concealed, question mark where identity questionable**

Planar Features

- Multiple measurements at a single locality**
- Inclined bedding; showing strike and dip**
- Inclined bedding**
- Horizontal bedding**
- Inclined joint**
- Inclined joint**
- Vertical joint**
- Vertical joint**

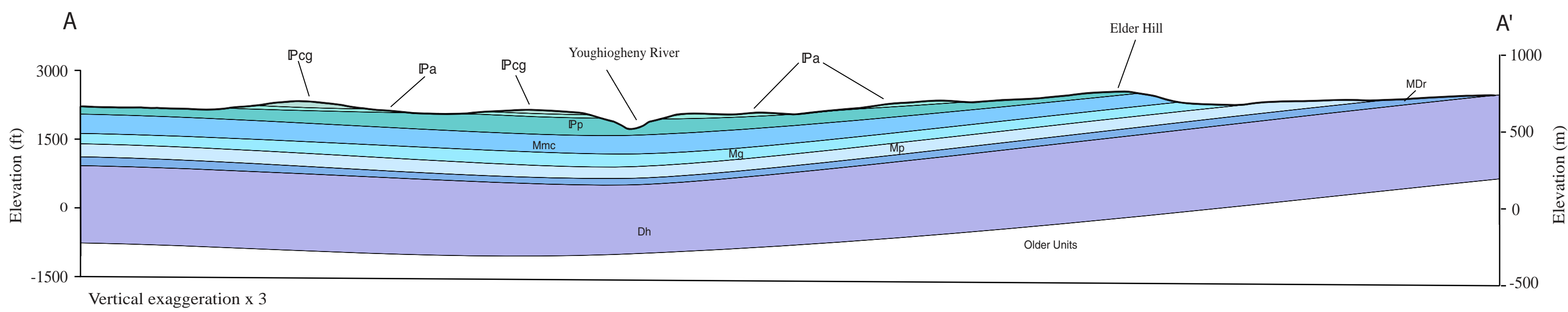
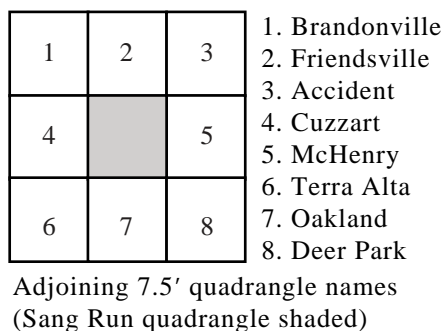
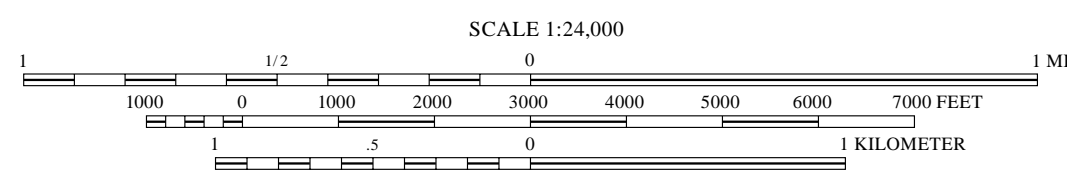
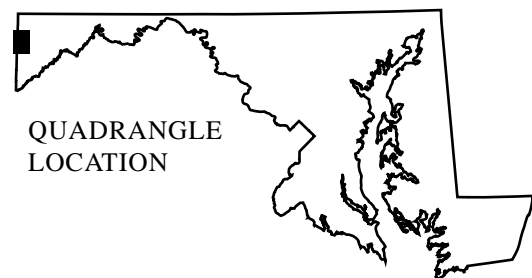
Other Features

- Quarry, active**
- Quarry, inactive**
- Mine prospect or adit, inactive**

Transportation

-
- The diagram illustrates a river network and its relationship to topographic features. It includes the following elements:
- Primary route, class 1 (undivided):** Represented by a thick black line.
 - Secondary route, class 2:** Represented by a thinner black line.
 - Topographic index contour (100-ft interval):** Represented by a brown line with the number '300' above it.
 - Topographic intermediate contour (20-ft interval):** Represented by a thinner brown line.
 - Hydrography:** A section showing a blue line labeled *Muddy_creek* and a blue oval labeled *Deep_lake*.
 - Stream:** A label pointing to the blue line representing the stream.
 - Water body (e.g. lakes, ponds, rivers):** A label pointing to the blue oval representing a water body.

by
Savage Adams
2025



State of Maryland
Wes Moore
Governor

Aruna Miller
Lieutenant Governor



Department of Natural Resources
Josh Kurtz
Secretary

David Goshorn
Deputy Secretary

Maryland Geological Survey
Stephen Van Ryswick
Director



Publication # DNR 12-011425-2

The facilities and services of the Maryland Department of Natural Resources are available to all without regard to race, color, religion, sex, sexual orientation, age, national origin, or physical and mental disability.

Acknowledgements: This map was partially funded by the U.S. Geological Survey, National Cooperative Mapping Program, under USGS award numbers G15AC000238 and G22AC000575. The author appreciates the map reviews by D.K. Brezninski, W.K. Vincett III and C.P. Williams. Digital map compilation by William K. Vincett III. The views and conclusions contained in this document are those of the author and should not be interpreted as necessarily representing the official policies, either expressed or implied, of the U.S. Government. Geologic field mapping conducted in 2015-2016 and 2024.

Version: SANGR2025.1