

WIDEWATER QUADRANGLE
 VIRGINIA-MARYLAND
 7.5 MINUTE SERIES (ORTHOPHOTOQUAD)



State of Maryland
 Parris N. Glendening, Governor
 Kathleen Kennedy Townsend, Lt. Governor
 Department of Natural Resources
 J. Charles Fox, Secretary
 Karen M. White, Deputy Secretary
 Resource Assessment Service
 Paul O. Massicot, Director
 Maryland Geological Survey
 Emery T. Cleaves, Director





Shoreline Changes
 Widewater Quadrangle, VA-MD

Compiled by

Maryland Geological Survey
 Coastal and Estuarine Geology Program
 2300 St. Paul Street
 Baltimore, Maryland 21218
 Telephone: (410) 554-5500
 Website: www.mgs.md.gov

2001

LEGEND

-  1862 Shoreline
-  1904 Shoreline
-  1972 Shoreline
-  1993 Shoreline

SOURCES OF DATA

Base Image

Composite of resampled digital orthophoto quarter quads (Widewater - NE, SE) produced by the Maryland Department of Natural Resources (DNR) from aerial photography flown on April 7, 1993

Shorelines

1862, 1904 - Historical Shorelines CZM Map 6A (Maryland Geological Survey, 1975); digitized using AutoCAD

1972 - National Oceanic and Atmospheric Administration, National Ocean Service T-sheets listed below; digitized using GSMAP or AutoCAD

T-sheet	Field Edit	Date of Photography
TP-00329	1972	1971
TP-00331	1972	1971

1993 - orthophotoquad shoreline extracted from a DNR digital wetlands delineation based on photo interpretation of digital orthophoto quarter quads

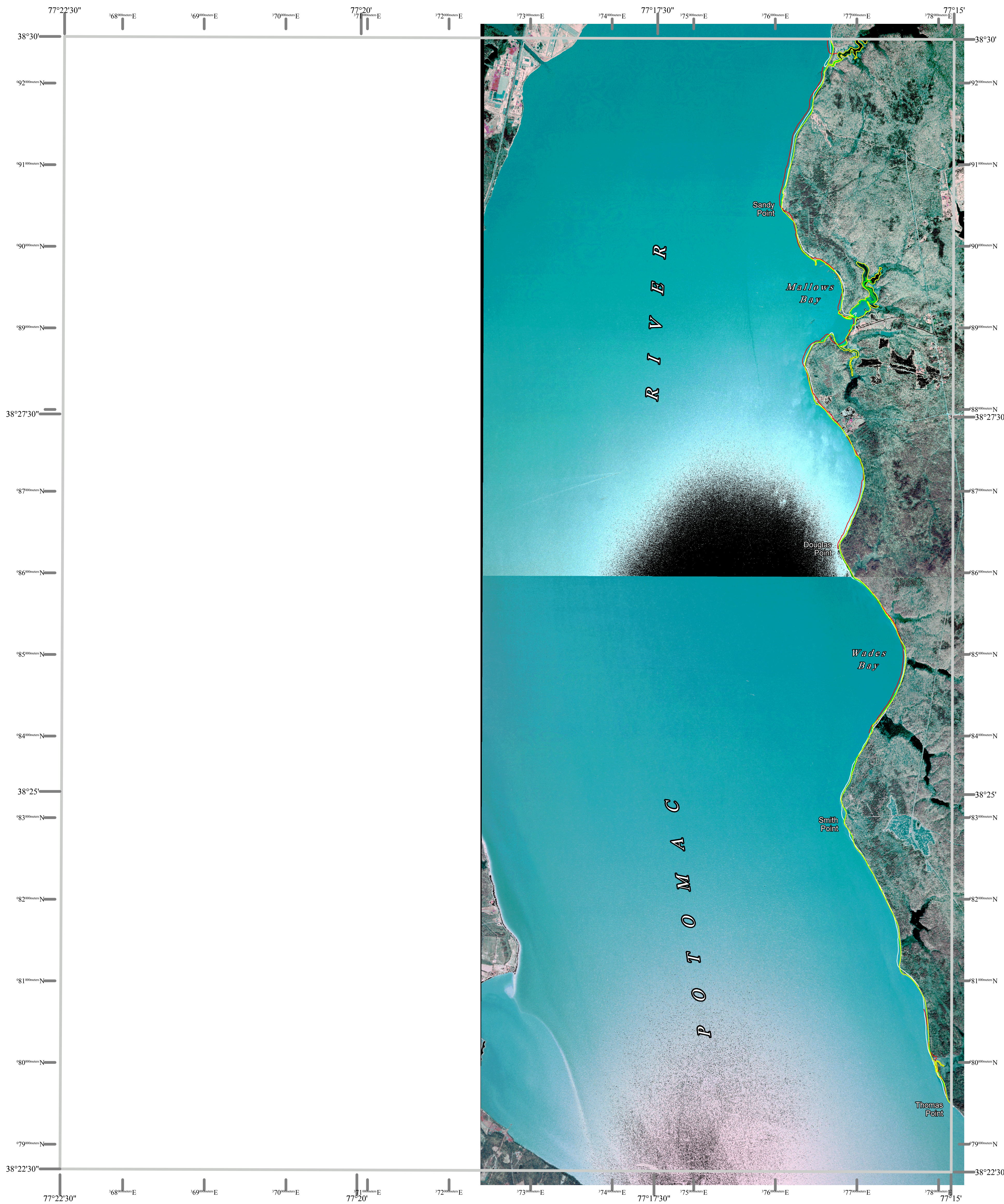
ACKNOWLEDGMENTS

This map was prepared using the geographic information system TNTmips by MicroImages, Inc.

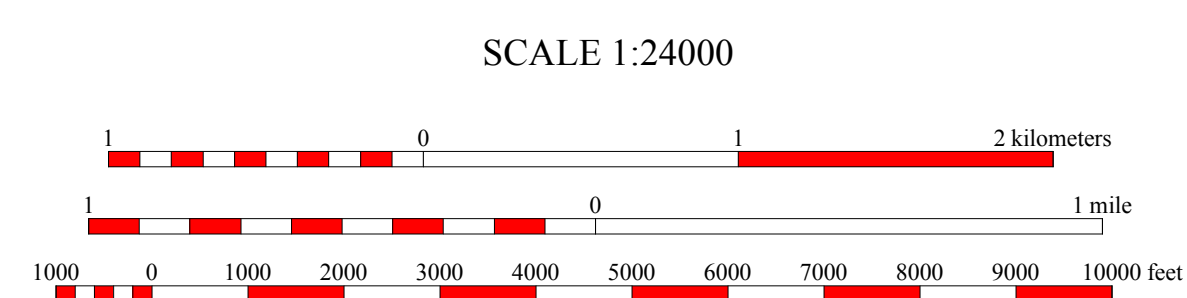
Partial funding was provided by a grant from the National Oceanic and Atmospheric Administration (Award No. NA 07OZ0118), administered by the Maryland Department of Natural Resources, Coastal Zone Management Program (CZM Grant M01-056 CZM 040).

The facilities and services of the Maryland Department of Natural Resources are available to all without regard to race, color, religion, sex, sexual orientation, age, national origin, or physical or mental disability.

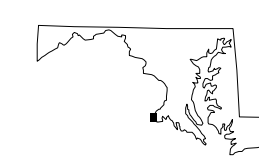
This document is available in alternative format upon request from a qualified individual with a disability.



North American Datum of 1983 (NAD 83)
 Projection and 1000-meter grid ticks:
 Maryland State Plane Coordinate System



HORIZONTAL DATUM NAD 83



WIDEWATER, VA-MD
 MGS-01-254-1
 Second Edition
 DATE OF PHOTOGRAPHY
 April 7, 1993

1	2	3
4	5	6
7	8	

1 Joplin
 2 Quantico
 3 Indian Head
 4 Stafford
 5 Nanjemoy
 6 Fredericksburg
 7 Passapatanzy
 8 King George

INDEX TO ADJOINING 7.5' MAPS

