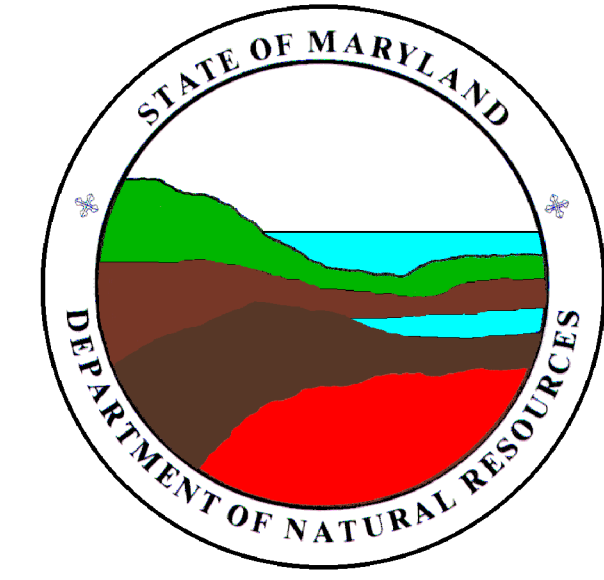


COVE POINT QUADRANGLE
MARYLAND
7.5 MINUTE SERIES (ORTHOPHOTOQUAD)



State of Maryland
Parris N. Glendening, Governor
Kathleen Kennedy Townsend, Lt. Governor
Department of Natural Resources
J. Charles Fox, Secretary
Karen M. White, Deputy Secretary
Resource Assessment Service
Paul O. Massicot, Director
Maryland Geological Survey
Emery T. Cleaves, Director




Shoreline Changes
Cove Point Quadrangle, MD

Compiled by

Maryland Geological Survey
Coastal and Estuarine Geology Program
2300 St. Paul Street
Baltimore, Maryland 21218
Telephone: (410) 554-5500
Website: www.mgs.md.gov

2001

LEGEND

-  1848 Shoreline
-  1942 Shoreline
-  1993 Shoreline

SOURCES OF DATA

Base Image
Orthophotoquad (38076-D4-OQ-024) produced by the U.S. Geological Survey from the following 1:40000 scale aerial (NAPP) photographs:

NAPP Photo ID	Date of Photography
20-15	4/20/1989
20-50	4/20/1989
20-52	4/20/1989

Shorelines

1848 - Historical Shorelines CZM Map 97A (Maryland Geological Survey, 1975); digitized using AutoCAD

1942 - National Oceanic and Atmospheric Administration, National Ocean Service T-sheets listed below; digitized using GSMAP or AutoCAD

T-sheet	Field Edit	Date of Photography
T-8111	none	1942
T-8544	none	1942

1993 - orthophotoquad shoreline extracted from a Maryland Department of Natural Resources (DNR) digital wetlands delineation based on photo interpretation of DNR digital orthophoto quarter quads (Cove Point - NW, SE, SW) flown on April 8, 1993

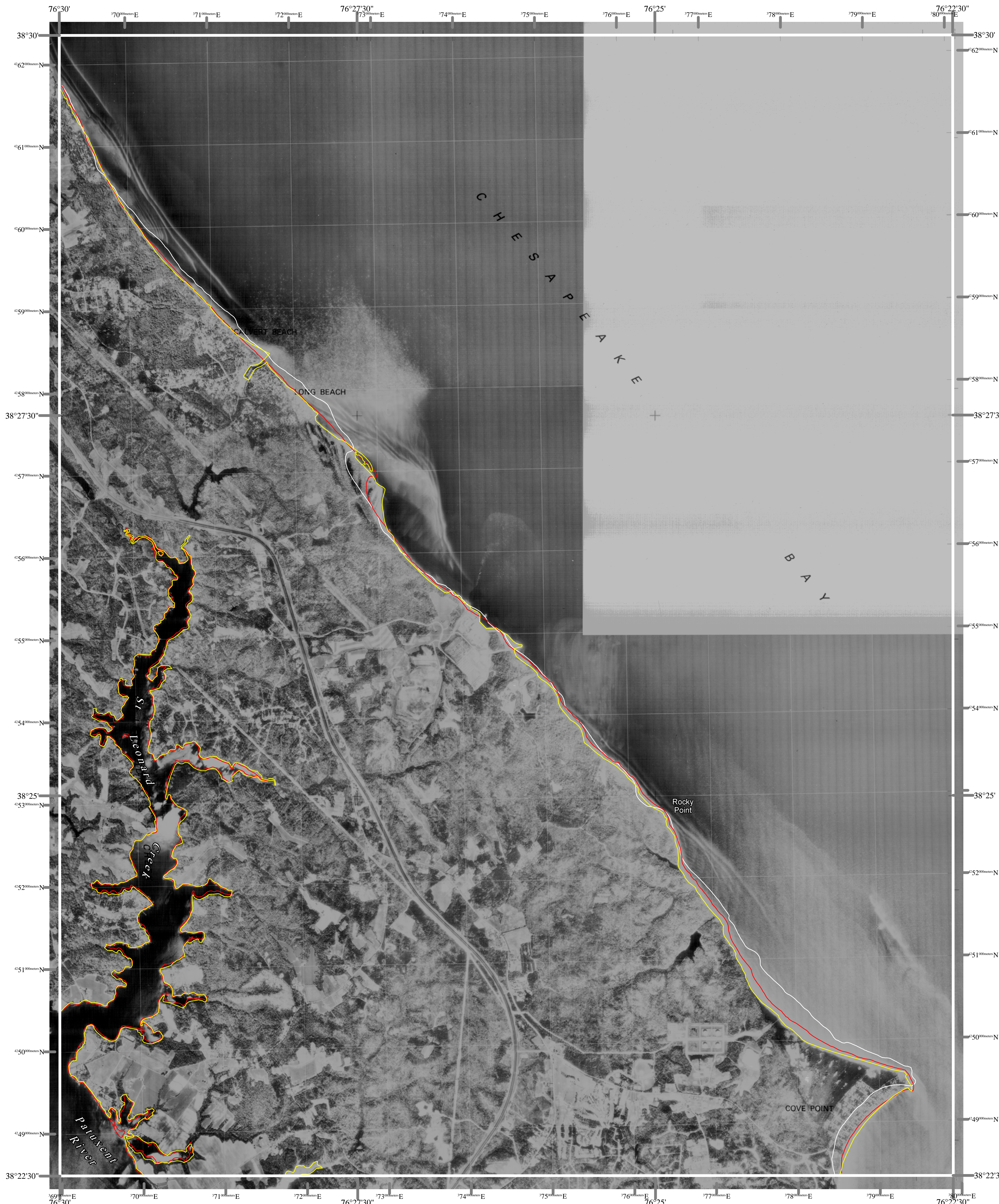
ACKNOWLEDGMENTS

This map was prepared using the geographic information system TNTmips by MicroImages, Inc.

Partial funding was provided by a grant from the National Oceanic and Atmospheric Administration (Award No. NA07OZ0118), administered by the Maryland Department of Natural Resources, Coastal Zone Management Program (CZM Grant M01-056 CZM 040).

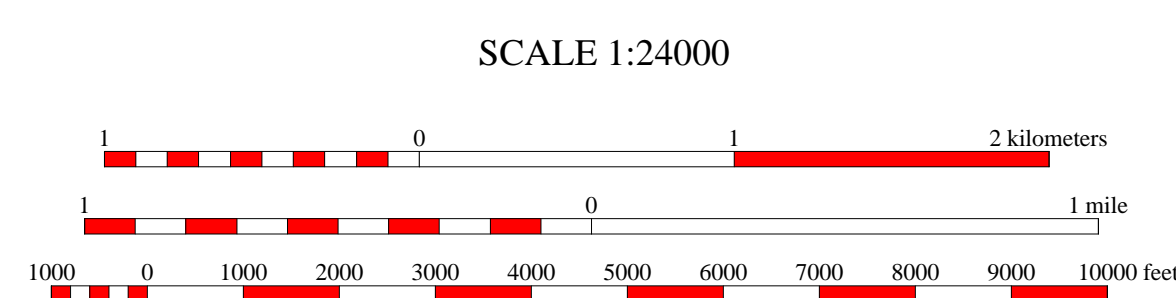
The facilities and services of the Maryland Department of Natural Resources are available to all without regard to race, color, religion, sex, sexual orientation, age, national origin, or physical or mental disability.

This document is available in alternative format upon request from a qualified individual with a disability.



North American Datum of 1983 (NAD 83)
Projection and 1000-meter grid ticks:
Universal Transverse Mercator: zone 18

The North American Datum of 1927 (NAD 27)
shown as dashed corner ticks.



HORIZONTAL DATUM NAD 83

COVE POINT, MD
MGS-01-051-1
Second Edition
DATE OF PHOTOGRAPHY
April 20, 1989



1	2	3
4	5	6
7	8	

- 1 Prince Frederick
- 2 - none -
- 3 Hudson
- 4 Brookes Island
- 5 Taylors Island
- 6 Hollywood
- 7 Solomons Island
- 8 Barren Island

INDEX TO ADJOINING 7.5' MAPS

