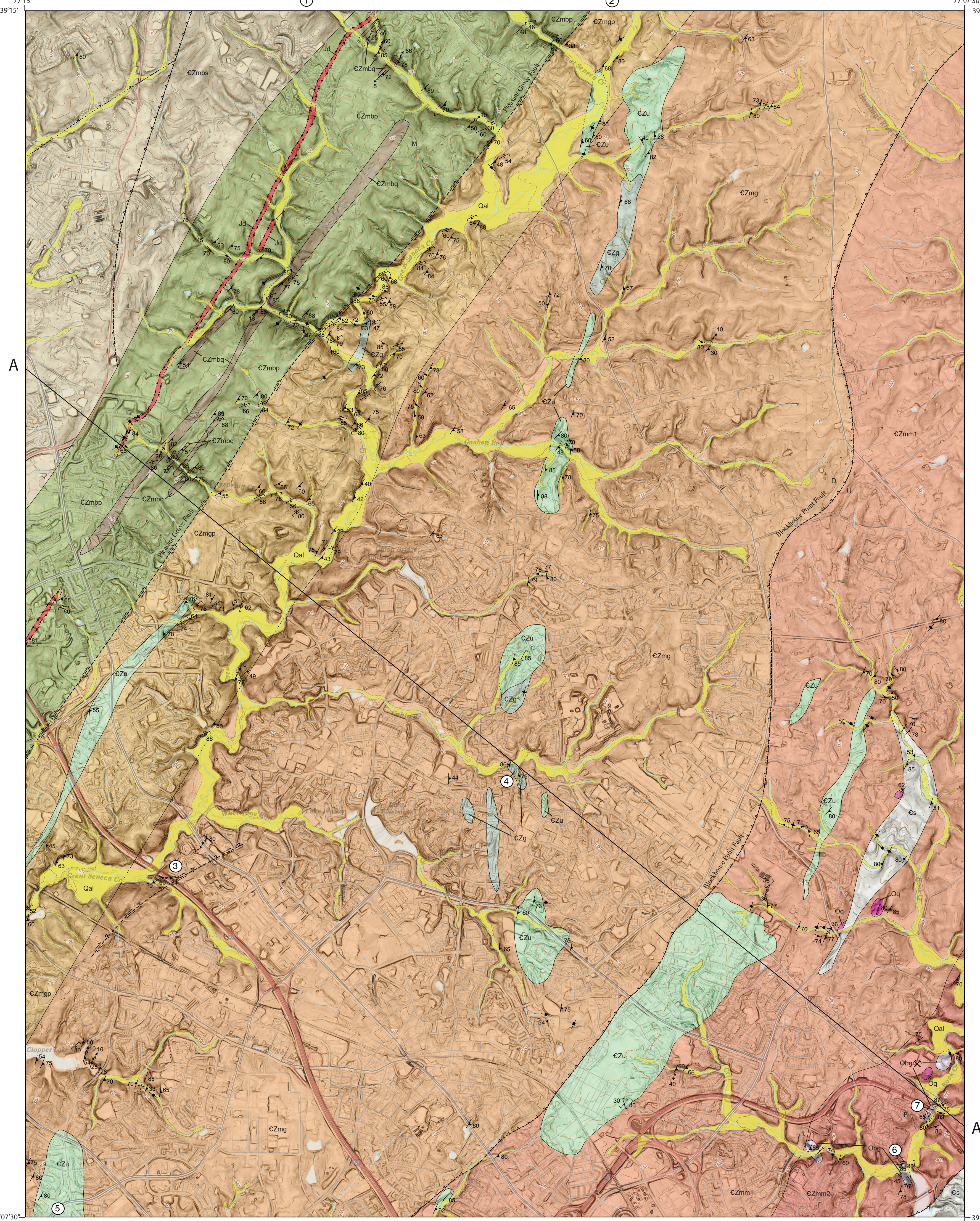


Geologic Map of the Gaithersburg Quadrangle, Montgomery County, Maryland

by Rebecca Kavage Adams, 2023

Description of Map Units

- Quaternary**
 - Alluvium (Holocene)** (Qal)
 - Poorly to well sorted, stratified mixtures of unconsolidated clay, silt, sand, gravel, and cobbles underlying flood plains of nearby rivers and tributaries. Channels of tributaries are commonly incised into bedrock with alluvium covering and exposed along the banks. Thickness of alluvium is highly variable, and is a function of bedrock, topography, and land-use practices. Locally, thick deposits of alluvium result from soil erosion due to agricultural practices of the 19th century (Southworth et al., 2008). Abundant deposits of alluvium are present in Great Seneca Creek and Goshen Branch.
- Jurassic**
 - Diabase dikes and sills (Early Jurassic)** (Jd)
 - Medium- to dark-gray, medium-grained crystalline and equigranular, massive diabase that weathers to characteristic rusty orange-brown surface and rounded boulders. One linear dike from south of Damascus to Germantown mapped on presence of rounded boulders in stream valleys and previous maps (Closs, 1953; Froelich, 1975).
 - Quartz bodies** (Qz)
 - White, massive, and intensely fractured irregular bodies of quartz. Interpreted to result from intrusion as large veins or metamorphic differentiation during the Ordovician (Lytle, et al., 2017) and now preserved as smaller remnants. Four quartz bodies are mapped in the Mather Gorge Formation based on small outcrops and abundant angular boulders.
- Ordovician ?**
 - Bear Island Granodiorite** (Obg)
 - Pinkish-gray, fine to coarse grained muscovite-biotite granodiorite and related pegmatite composed largely of plagioclase feldspar, with lesser quartz and mica. Hornblende crystals 0.1 to 1 inch long (3 mm to 2 cm) in size are seen in pegmatite veins. Forms small- to medium-size, crosscutting sheets and bodies in rocks of the Mather Gorge Formation and appear undeformed. Old quarries are 20 to 100 feet in length and crosscutting bodies are 1 to 5 feet thick. Along Mill and Rock Creeks in the southeastern corner of the quadrangle, dark gray to black schist is found within and adjacent to light granodiorite as residuals and melanosome (Maxeiner et al., 2017). The Bear Island Granodiorite may be a later phase of partial melting during the migmatization of the Mather Gorge Formation. Minimum age is estimated at 469-±20 Ma based on Rb-Sr dating (Muth et al., 1979).
- Lower Cambrian and/or Neoproterozoic**
 - Sykesville Formation (Lower Cambrian)** (Cs)
 - Variiegated, gray metamorphosed sedimentary mélange consisting of a quartzofeldspathic granofels matrix containing quartz and feldspar grains, and fragments and bodies of metamorphosed sedimentary, volcanic, and intrusive rocks.
 - Marburg Formation (Lower Cambrian? and Neoproterozoic?)**
 - Metasiltstone** (CZmbs)
 - Greenish-gray to light-olive-gray, phyllitic metasiltstone containing thin, light-gray quartz laminae and ribbons; medium-light-gray to very pale-orange muscovite phyllite. Much of the unit is transposed, phyllonitized, and has abundant pods and stringers of white vein quartz with deposits of chlorite and epidote (Southworth, 1999).
 - Phyllonite (Pleasant Grove shear zone)** (CZmnp)
 - Greenish-gray, chlorite phyllonite containing white vein quartz. Many foliation surfaces have abundant magnetite crystals from 0.04 to 0.2 inches (1 to 5 mm) in size. Highly sheared with phacoidal "oyster-shell" fabric that becomes penetrative near the Pleasant Grove Fault (Muller, 1994). The northwestern contact of the unit was also defined based on a linear pattern of magnetic highs from aeromagnetic maps (Fisher et al., 1979) of this region and washboard pattern in hillslope derived from LIDAR.
 - Quartzite** (CZmq)
 - Light- to medium-olive gray, coarse-grained, blocky to massive quartzite. Pebbly beds are sometimes present, containing white to bluish-gray quartz pebbles 0.04 to 0.1 inches (1 to 3 mm) in size. Foliated pyrite crystals 0.04 to 0.4 inches (1 to 10 mm) in size are common. A 2 to 20 inch (5 to 50 cm) spaced cleavage, folded into antiforms and synforms on a 15 to 30 foot (5 to 10 m) scale, is present in quartzite beds.
 - Mather Gorge Formation (Lower Cambrian? and Neoproterozoic?)**
 - Schist with interlayered metagraywacke** (CZmg)
 - Quartz-mica schist with subordinate quartzitic metagraywacke interbedded in layers and lenses on a millimeter to meter scale (pelitic and psammite schist of Closs et al., 1964). Magnetite-epidote-plagioclase-chlorite-muscovite-quartz schist is fine-grained, lustrous greenish gray to gray (Drake et al., 1999; Muller, 1994). Metagraywacke is light to dark olive gray, fine- to medium-grained, with mm-scale mylonitic foliation folded into small antiforms and synforms. Quartz pebbles and graded bedding occasionally visible. Stringers and pods of isoclinaly folded and boudinaged white quartz veins are abundant. Although subordinate, metagraywacke is more frequently seen in outcrop than schist due to its resistance to weathering.
 - Schist with interlayered metagraywacke (Pleasant Grove shear zone)** (CZmnp)
 - Interbedded quartz-mica schist and quartzitic metagraywacke with penetrative S-C metamorphic fabric, formed by the intersection of the dominant foliation (S) and the shear plane (C) near the Pleasant Grove Fault (Krot and Muller, 1995; Muller, 1994). Mapped on distinct phacoidal "oyster-shell" appearance although lithologically is similar to CZmg.
 - Migmatite 1** (CZmm1)
 - Interbedded quartz-mica schist and quartzitic metagraywacke with intermittent zones of in-situ leucosome and melanosome producing stromatic migmatite (Maxeiner et al., 2017) with cm-scale light/dark banding (lit-par-lit) of Closs, et al., 1964). Only the schist is migmatitic; metagraywacke remains similar in appearance to CZmg. Weathering form of migmatite outcrops is more massive and rounded than CZmg. The western boundary of this unit is postulated to be the Blockhouse Point Fault of Kunk et al. (2005) and Wintch et al. (2010).
 - Migmatite 2** (CZmm2)
 - Interbedded quartz-mica schist and quartzitic metagraywacke with abundant zones of highly folded stromatic migmatite and cross-cutting leucosome in cm-scale bands and meter-scale bodies sometimes containing residuals of schist and metagraywacke (Maxeiner et al., 2017). Only the schist is migmatitic; metagraywacke remains similar in appearance to CZmg and sometimes occurs as residuals surrounded by migmatite. Leucosome ranges in color from white to very pale orange and is comprised of mm-cm size crystals of plagioclase feldspar, quartz, and muscovite. Occasional bands of leucosome with larger (0.2 to 0.5 inches / 5 mm to 1 cm) crystal size also contain black, bladed hornblende crystals. Bodies of leucosome larger than 5 feet (2 meters) are mapped as Obg. Most of these appear to have been quarried.
 - Ultramafic Rocks** (CZu)
 - Undifferentiated serpentine and soapstone that occur within rocks of the Mather Gorge Formation. Serpentine is hard, massive, dark green to black, and has a cracked, sometimes soft, light gray weathering surface. Soapstone is light gray to light-greenish-gray, very soft, and weathers white with rusty pitted spots. Where exposed, the margins of serpentine bodies are magnesian schist of fine- to coarse-grained tremolite, actinolite, chlorite, and epidote schist. Extent of several ultramafic bodies in heavily developed areas are based on previous maps due to poor exposure (Closs and Cooke, 1953; Froelich, 1975; Southworth et al., 2008).
 - Mafic Rocks** (CZg)
 - Undifferentiated metagabbro and magnesian schist that occur within rocks of the Mather Gorge Formation. Metagabbro has a hard, massive, dark grayish-green to pinkish-gray fine-grained matrix surrounding dark greenish-gray, wavy, fibrous-hornblende crystals of antigorite from 0.1 to 1 inch (3 mm - 2 cm) in size. Magnesian schist is soft, colorless (tremolite) to greenish-gray (actinolite), with bladed crystals from 0.1 to 0.5 inch (3 mm to 1 cm) in length. Extent of several mafic bodies in heavily developed areas are based on previous maps due to poor exposure (Closs and Cooke, 1953; Froelich, 1975; Southworth et al., 2008).



- ### Explanation of Map Symbols
- Contacts**
 - Geologic contacts, inferred; dotted where concealed by alluvium, dashed where projected in cross section.
 - Contact of dike mapped by presence of cobbles and boulders.
 - Faults**
 - Fault, unknown type, location inferred. Dotted where concealed by alluvium.
 - Strike-slip fault, location inferred. Arrows show relative motion. Dotted where concealed by alluvium, ? where existence is uncertain.
 - Strike-slip movement toward viewer
 - Strike-slip movement away from viewer
 - Fault, unknown type, in cross section. Arrows showing relative motion
 - Folds**
 - Showing axial trace and plunge direction
 - Minor antiform (1-10 m)
 - Inclined small antiform (20-100 cm)
 - Other Features**
 - Quarry (historic)
 - Pyrite porphyroblasts, 1-10 mm
 - Magnetite porphyroblasts, 1-5 mm
 - Garnet porphyroblasts, 1-5 mm
 - S-C metamorphic fabric, formed by intersection of dominant foliation (S) and the shear plane (C)
 - Planar Features**
 - Showing strike and dip
 - Inclined joint
 - Vertical or near-vertical joint
 - Inclined spaced cleavage
 - Vertical spaced cleavage
 - Inclined penetrative foliation
 - Vertical penetrative foliation
 - Inclined schistosity
 - Inclined crenulation or small folds of foliation (1 mm-20 cm)
 - Inclined shear band cleavage, dextral sense of shear
 - Vertical, shear band cleavage, dextral sense of shear
 - Linear Features**
 - Showing bearing and plunge
 - Inclined aligned deformed/elongate minerals
 - Inclined foliation-cleavage intersection
 - Inclined cleavage-cleavage intersection

- ### Base Map Symbols
- Transportation**
 - Primary highway, divided by median strip
 - Primary route, class 1 (divided, lanes separated)
 - Primary route, class 1 (undivided)
 - Secondary route, class 2
 - Light duty road or street, class 3
 - Railroad
 - Topography**
 - Topographic index contour (100-ft interval)
 - Topographic intermediate contour (20-ft interval)
 - Hydrography**
 - Muddy Creek
 - Stream
 - Spring
 - Deep lake
 - Water body (e.g. lakes, ponds, rivers)

References

Closs, E., and Cooke, C.W., 1953, Geologic map of Montgomery County and the District of Columbia: Maryland Department of Geology, Mines and Water Resources, scale 1:62,500.

Closs, E., Fisher, G.W., Hopson, C.A., and Cleaves, E.T., 1964, The geology of Howard and Montgomery Counties: Maryland Geological Survey, 373p.

Drake, A.A., Southworth, S., and Lee, K.Y., 1999, Geologic map of the Seneca quadrangle, Montgomery County, Maryland, and Fairfax and Loudoun Counties, Virginia: U.S. Geological Survey Geologic Quadrangle Map GQ-1802, scale 1:24,000.

Fisher, G.W., Higgins, M.W., and Zietz, I., 1979, Geological interpretations of aeromagnetic maps of the crystalline rocks in the Appalachians, northern Virginia to New Jersey: Maryland Geological Survey Report of Investigations 32, 43 p.

Froelich, A.J., 1975, Map showing mineral resources of Montgomery County, Maryland: U.S. Geological Survey Miscellaneous Investigations Series, Map I-920-E, scale 1:62,500.

Krot, M.A., and Muller, P.D., 1995, Microstructural evidence for dextral shearing within the Pleasant Grove Zone, Maryland: Northeastern Geology and Environmental Sciences, v. 17, no. 2, p. 151-161.

Maxeiner, R.O., Ashton, K., Cad, C.D., Morelli, R.M., and Knox, B., 2017, A field guide to naming migmatites and their textures, with Saskatchewan examples: in Summary of Investigations 2017, Volume 2, Saskatchewan Geological Survey, Saskatchewan Ministry of the Economy, Miscellaneous Report 2017-4.2, Paper A-2, 21p.

Muller, P.D., 1994, Geologic map of the Finksburg Quadrangle, Carroll and Baltimore Counties: Maryland Geological Survey, scale 1:24,000.

Muth, K.G., Arth, J.G., and Reed, J.C., Jr., 1979, A minimum age for the high grade metamorphism and granite intrusion in the Piedmont of the Potomac River gorge near Washington, D.C.: Geology, v. 7, no. 7, p. 349-350.

Pearce, N.C., and Heyl, A.V., 1960, Chromite and other mineral deposits in serpentine rocks of the Piedmont upland, Maryland, Pennsylvania, and Delaware: U.S. Geological Survey Bulletin 1082-K, p. 707-833, plate 40, scale 1:125,000.

Southworth, S., 1999, Geologic map of the Urbana quadrangle, Frederick and Montgomery Counties, Maryland: U.S. Geological Survey Geologic Quadrangle Map GQ-1768, scale 1:24,000.

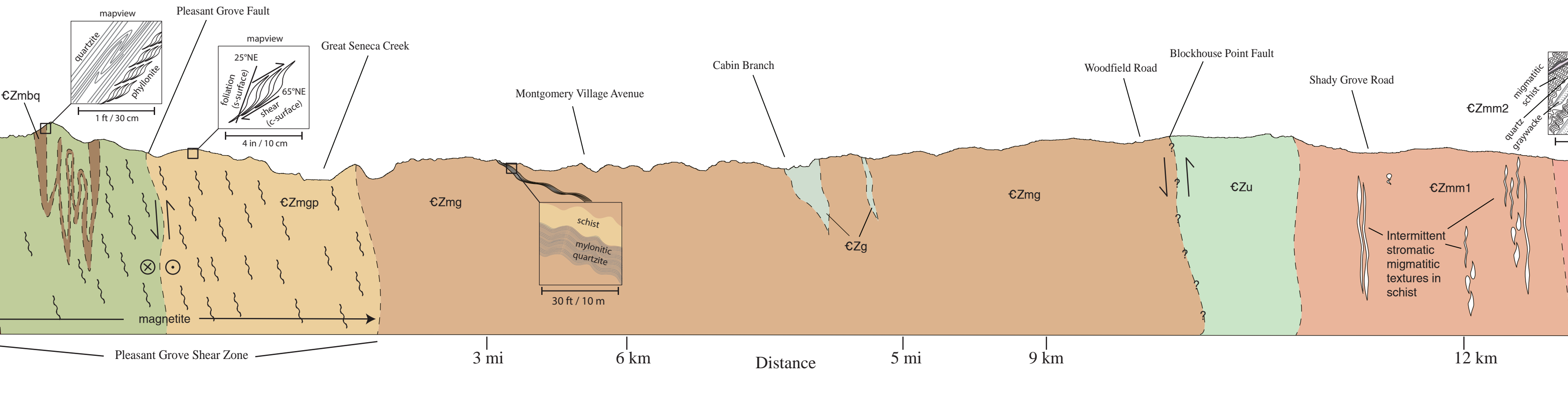
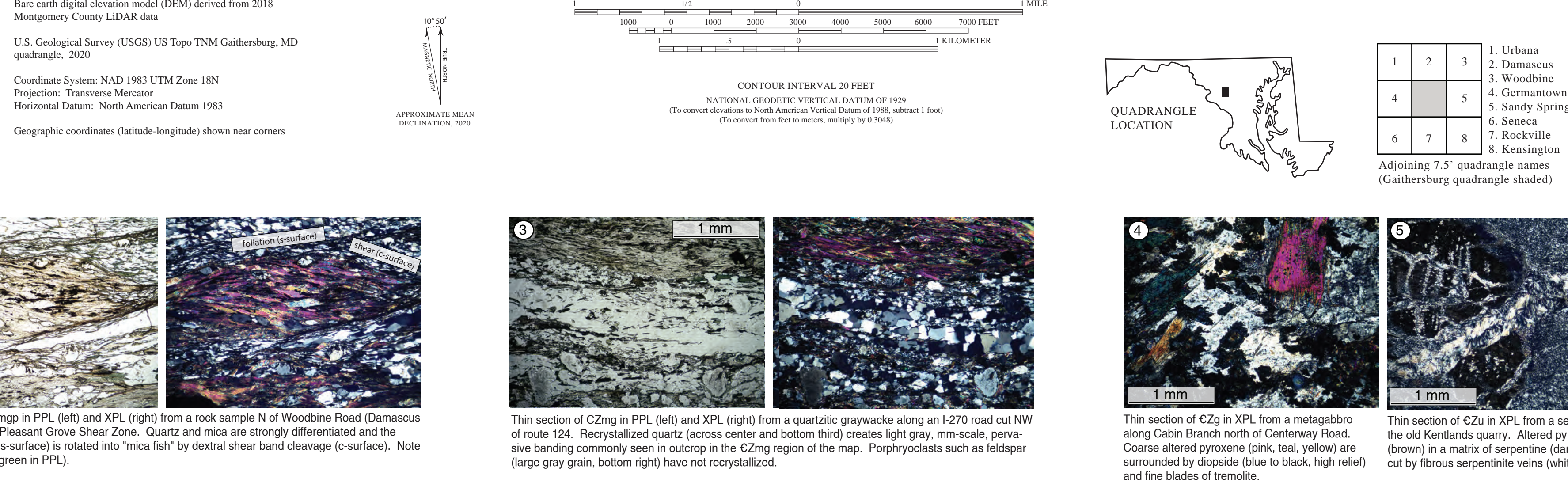
Southworth, S., Brozinski, D.K., Drake, A.A., Burton, W.C., Orndorff, R.C., Froelich, A.J., Reddy, J.E., Denemy, D., and Daniels, D.L., 2008, Geologic map of the Frederick 30 x 60 quadrangle, Maryland, Virginia, and West Virginia: U.S. Geological Survey Scientific Investigations Map SIM-2889, scale: 1:100,000.

Wintch, R.P., Kunk, M.J., Mulvey, B.K., Southworth, C.S., 2010, 40Ar/39Ar dating of Silurian and Late Devonian cleavages in lower greenschist-facies rocks in the Westminster terrane, Maryland, USA: Geological Society of America Bulletin, vol. 122, issue 5-6, pp. 658-677.

Use constraint: The Maryland Geological Survey makes no warranty, express or implied, as to the use or appropriateness of the data and there are no warranties of merchantability or fitness for a particular purpose or use. The Maryland Geological Survey makes no representation as to the accuracy or completeness of the data and may not be held liable for human error or defect. Data are only valid at 1:24,000 scale. Data should not be used at a scale greater than that.

The facilities and services of the Maryland Department of Natural Resources are available to all without regard to race, color, religion, sex, sexual orientation, age, national origin, or physical and mental disability.

State of Maryland
Larry Hogan
Governor
Boyd K. Rutherford
Lieutenant Governor



Acknowledgements: This map was partially funded by the U.S. Geological Survey, National Cooperative Mapping Program, under USGS award number G19AC00251. The author appreciates the map review by D.K. Brozinski. The views and conclusions contained in this document are those of the author and should not be interpreted as necessarily representing the official policies, either expressed or implied, of the U.S. Government.

Geologic field mapping conducted in 2019-2020.
Version: GAITHE23.0F
DRAFT
Released December 2023
Publication number DNR 12-120723-1

Department of Natural Resources
Janette Haddock-Rocco
Secretary
Charles Glass, PhD
Deputy Secretary
Maryland Geological Survey
Richard A. Ont, Jr.
Director